



# Certificate of Analysis

UElandy Inc.

Room 302, Building 1, No.18& Chunyao Road,

Xiangcheng District, Suzhou,

Jiangsu Province P.R, 215143 China

www.uelandy.com

Refer to website for regional contact information.

Product Name:	UE Plasmid Miniprep Kit	Lot ID:	220506KA1
Catalog Number:	UE-MN-P-250	Expiration Date:	05/05/2025

## Quality Control

### Spectrophotometric Analysis

- Acceptable Range for  $A_{260}/A_{280}=1.8\pm0.15$ .
- Comparison of the Test Sample to a previously tested Standard. Acceptable range for Test Sample is  $\leq \pm 10\%$  of Standard, based upon spectrophotometric analysis. The "Standard" is a previously tested and validated sample.

### Restriction Analysis

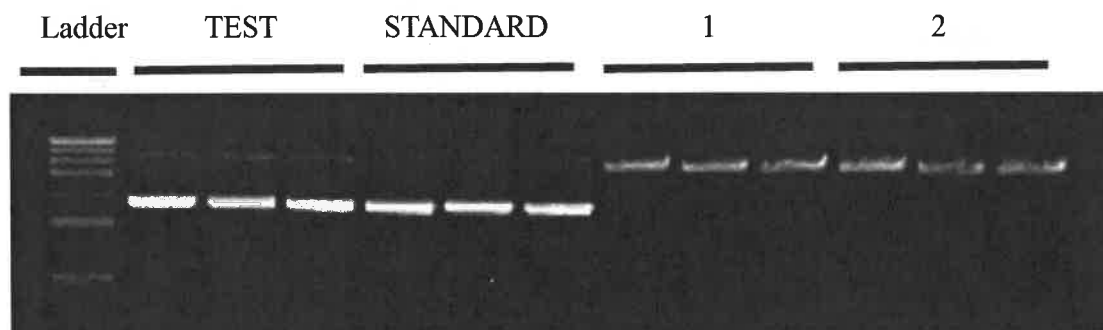
- 1 $\mu$ g of plasmid is digested to completion by EcoRI

### Electrophoretic Analysis

- Agarose gel electrophoresis of the samples exhibits a defined plasmid band with no degradation.
- Agarose gel electrophoresis of the samples exhibits no contaminating RNA.
- Agarose gel electrophoresis of the samples exhibits no contaminating bacterial genomic DNA.

### Gel Image and Test Data

Item	Test Date						Sample
	1	2	3	4	5	6	
A260	0.567	0.526	0.585	0.598	0.562	0.558	1,2,3 are duplicate Test Samples 4,5,6 are duplicate Standards
A280	0.317	0.275	0.321	0.324	0.306	0.318	
A260/A280	1.788	1.913	1.823	1.844	1.834	1.755	
Yield ( $\mu$ g)	8.511	7.890	8.768	8.974	8.425	8.373	
Electrophoresis	√	√	√	√	√	√	PASS
No visible RNA	√	√	√	√	√	√	
Endonuclease digest	√	√	√	√	√	√	
[Test Sample/Standard] Yield Difference	2.34%						PASS



※1 and 2 respectively represent the test and standard enzyme digestion

UElany Inc. warrants and represents that all inspections and testing for the article described above have been performed at UElany Inc. QC laboratory located on-site at the manufacturing plant. UElany Inc. manufacturing facility is located at Room 302, Building 1, No.18& Chunyao Road, Xiangcheng District, Suzhou, Jiangsu Province P.R, 215143 China

(QC Inspector)

Min Ma

(Approver)